



The Pelican News

FROM THE PRESIDENTS' DESKS

I thought last Tuesday's meeting was excellent and was glad to see 13 members and two partners attend and hear the 2 ladies from Grandparents raising Grandkids. It was particularly moving to hear the story from Jenny stepping up as a Grandmother to look after her grandkids when first her son in law and then her daughter died from illnesses. Full report from Julie inside.

It is getting towards the end of the Rotary year and that means the preparation of our annual report and its presentation at our Changeover dinner on Tuesday 23rd June. President David has agreed to pull the Annual Report together, as he does so capably most years, but has asked directors to make his job a little easier by getting their reports in in plenty of time. His 1st deadline was the end of April (next Thursday). If you cannot make it by then let him know that you have not forgotten and tell him when you can get it to him.

We have a Bunnings this Sunday and a social on Tuesday . We are eating at Hadleys at 6 and joining the trivia competition at Mingara at 7pm.

Look forward to seeing most of you at one of these activities.

Best Wishes, Clive

On behalf of joint Presidents David Waterhouse & Clive Denmark

MONTHLY BULLETIN
2025-26
Volume 55 Issue 8

Bulletin editor: Julie Glover
weetaliba@bigpond.com

Follow us:

www.rotarytheentrance.org.au



Meetings are held on 1st and 3rd Tuesdays (and sometimes 5th) at the Mingara Club at 6:00 for 6:30

Board meetings on the 2nd Tuesday on zoom and social nights on the 4th.

Attendance and apologies to
David: 0450 068 887

EACH ONE
BRING ONE



COME, JOIN ROTARY

President Clive Denmark
David Waterhouse
Secretary Greg Maloney
Treasurer Julie Glover

ROTARY CLUB OF THE
ENTRANCE INC.

Chartered 26th April 1972
District 9685

RI President
Francesco Arezzo

District Governor
Michele Ellery

UNITE
FOR
GOOD



Salvation Army - Andrew Humphries

Supported by Kristie Maree 19th May

Andrew came along to encourage us to participate in the Red Shield Appeal—he has arranged an additional collection site on Wyong Rd in Killarney Vale.

He told us that last year they collected \$25,000 which went towards a support worker supporting women who had experienced domestic violence.

To emphasise the importance of this, he was accompanied by a lady named Kristie Maree, who shared her DV story. She told us she was born into domestic violence,



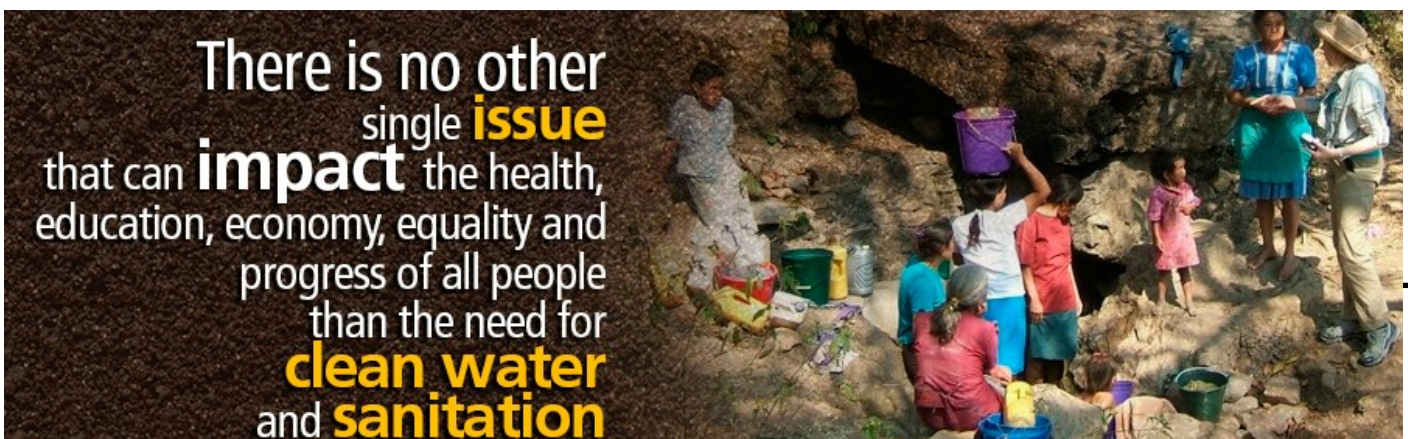
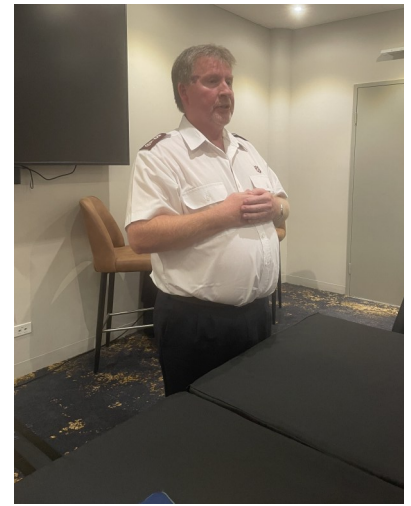
where obedience was expected and disappointment was met with anger. Love was conditional. She was eager to marry to escape the situation, but chose poorly—the only improvement was that her husband did not hit her. She kept thinking “maybe he will be happy if I had another baby” but 13 years and four children later nothing had changed.

Eight years ago she met a lady working with the Salvos, who recognised her situation and offered to walk beside her. She helped her to escape. She recounted some of the challenges of being homeless—like being given a two bed motel room with no cooking facilities to house the five of them —and being required to move out every five days as part of the terms of this government support. The Salvation Army helped her to connect to services, and eventually she got long term housing.

Kristie said that her family were now “five people with joy and confidence” and she plans on working with the Salvos herself to help others.

One member of our club commented that the Salvation Army were the only group which ever went to the front during wars—even the Red Cross held back. It is truly “Thank God for the Salvos!”

The Red Shield Appeal will be held on 30th and 31st May Our club is working on helping on Saturday 30th. All volunteers must be over 18.



PCYC Girls Program—this year’s major project.

Stacey Chant from the PCYC spoke to us last year explaining her vision of being able to run a program for girls. Historically PCYC has worked with difficult boys, with the aim of building a relationship between the Police and boys likely to be involved with antisocial behaviours, in the hopes of reducing crime before it begins. Relationships can be important particularly when the child is from a fractured or disinterested family.



Stacey is concerned with the rise in juvenile crime, and the fast increase in the number of girls involved. Her idea was to work within a primary school, with a group of girls put forward by the school, teaching them about social issues and allowing them to become familiar with the police before these girls start high school.

We applied for district funding, and with our support Stacey was able to approach Brooke Avenue Public School, who selected a group of a dozen girls in years 4 and 5 who they deemed to be at risk. Stacey and her team (including police youth liaison officers and the Regional Youth Support Services) developed a programme including such issues as Cyber Safety, saying “No” and personal hygiene, as well as playing sports and providing morning tea for them each week.

They visited Brooke Avenue through two terms—term four of 2025 and term 1 of 2026, and a small number of us were invited to attend their final visit. They had arranged a petting zoo to be present, which was specially for their participants, but during our visit the whole school came along in class groups to file past and have a look at the animals. Stacey also had a little gift bag for each of their girls—carefully considered for their age. It included some socks (they had noticed many girls did not wish to remove their shoes because of holes), a journal and pen, and some hair ties.



This term they are attending Bateau Bay Public School, also funded by us, and then next term they intend to go to The Entrance Primary School.

Some of the staff told us that they had detected a large change in the girls during the programme—from holding back and not talking much, they had become quite chatty and trusting. They

had also learnt that they should not allow personal touching, and now ask the police if it is ok to give them a hug! Their answer is—perhaps a high five!



The message we received was that our money was well utilised, and that some of the girls in our community are now much better prepared for their teenage years. Hopefully they will be happy to participate in sports at the PCYC. And they probably won’t be non-receptive when the police come knocking on their family’s door.



Grandparents Raising Grandchildren 21st April

Sarah Grey - Central Coast Family Support Services and Jenny

Given that Central Coast Christmas Tree sales each year largely support Grandparents Raising Grandchildren, we were pleased to welcome Sarah to tell us where the money goes.

This charity functions under the auspices of the Central Coast Family Support Services. This group support all types of families in need, but the funding we supply is specifically targeted at Grandparents, who mostly would have had no idea they would suddenly become full time carers for their grandchildren, for whatever reason. Sarah told us that the difficulty is that the grandparents get little direct government help, just as if they were the actual parents being able to claim a dependant on their tax. But of course many, as retirees, may not even pay tax!



Sarah introduced Jenny, who bravely told us her story, starting with the death of her son-in-law, followed



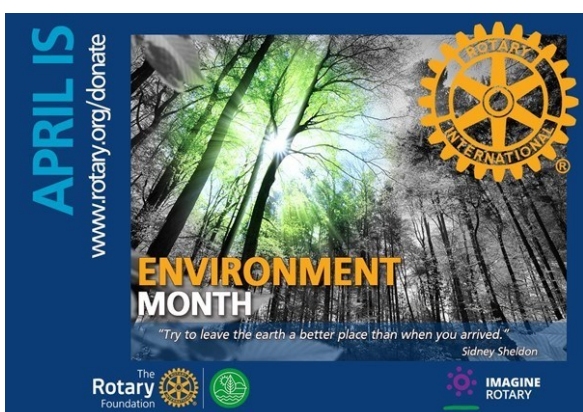
closely by the unsuccessful cancer treatment of her daughter who had known she was unwell but could not receive early treatment as she was caring for a newborn. Jenny had no choice but to take on her five grandchildren, aged from under one to 15 years. She brought the children to the coast and her husband visits weekly. She spoke of the grief the elder three children experienced, and how she feels disconnected.

Grandparents Raising Grandchildren aim to fill the gaps for their Grandparents. Jenny says she meets others like herself in meetings, and at the camps and activities which are organised regularly, offering a community for both the elders and the children, who connect with others who feel as they do.

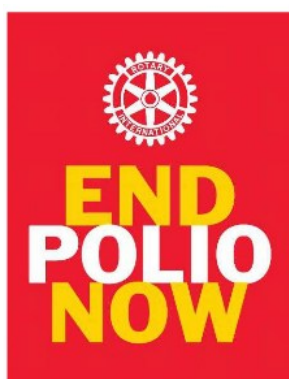
Sarah said that they could help people access services which might be available through other agencies, but that there were often things that grandparents just cant afford—like an extra television or something that the grandparents need like a recliner, which they can now no longer afford.

Grandparents were expecting these years to be their retirement—perhaps travel or downsizing—but now they are faced with many different challenges.

We were left feeling that our work at the Christmas Tree sale was delivering help where it was needed.



Rotary The Entrance



The Pelican News



27th April 2026



If you are caring for a loved one who is living with Dementia, a Rotary D-Caf is for you both.

A Dementia Café is a group which gathers for morning tea twice a month, providing suitable activities for those with dementia, while offering an opportunity for carers to talk amongst themselves, learning and sharing experiences—or indeed a friendly ear should they just need to offload and discuss with caring people.

We are offering a new D-Caf in the PCYC at Bateau Bay, commencing in February 2026, and being run by members and friends of Rotary The Entrance. This is a free service to our community.

Where: Bateau Bay PCYC—ground floor
 When: first and third Tuesdays from 10am to noon
 Commencing Tuesday 3rd February 2026

If you are interested in attending, places are limited, and you should register your interest with Julie by text to 0427 426393, or email weetaliba@bigpond.com



Researching mental health in children aged 0-12 years is crucial because mental health challenges often begin in childhood and can have long-term consequences if left unaddressed. Early intervention and prevention strategies are vital for improving lifelong mental health and wellbeing, as well as reducing disparities in mental health outcomes for vulnerable children.

Donations can be made individually or as a club to support this project

Donations to be made directly to Australian Rotary Health

Banking Details:

Australian Rotary Health
 BSB 112 879
 Account # 065 433 595

Reference: (Club Name first) e.g. LowerBlue FPP

Email: admin@arh.org.au to advise of the donation to the Funding Partner Project and for receipt details. Multiple names and amounts need to be advised.

Tax Deductible receipts sent to donors

Australian Rotary Health – PO Box 6161, Norwest NSW 2154 Phone: 8837 1900

Join us in Mudgee!
2027 ROTARY DISTRICT 9685 CONFERENCE
 Friday, 12 March - Sunday, 14 March 2027
 PARKLANDS RESORT, MUDGEE

Conference Highlights

- FRIDAY – CONNECT**
Reconnect with fellow Rotarians and friends.
- SATURDAY – COLLABORATE**
A full day of ideas, learning and shared experiences.
- SATURDAY AFTERNOON – COUNTRY FAIR**
Enjoy local artisans, food and wine in a relaxed country setting.
- EVENING BUSH DANCE**
Prizes for the best decorated table, plus a Boot Decorating Competition.
- SUNDAY – CELEBRATE**
Celebrate Rotary, friendships and the year ahead.

Join Us
 DISTRICT 9685 GOVERNOR
 MICHELE ELLERY
 AND HUSBAND DAVID

TICKETS AND PRICING
 Early Bird Conference - \$345 Available until 30 September 2026
 Full Conference - \$395 Available until 28 February 2027

For accommodation options and special deals, visit the conference website: rotarydistrict9685.org.au/page/conference

Rotary The Entrance

INVITATION
Rotary The Entrance is celebrating its Changeover and wishes to invite all members, supporters and friends to attend the dinner on Tuesday 23rd June in the Tasman Room, Mingara Recreation Club at 6:30 for 7:00pm

Cost \$55 per person
Dress smart casual

Please deposit identified ticket money to:

Bendigo Bank
 BSB 633 000
 Ac 168 103 455

Mingara is wheelchair accessible.

RSVP by 12 June
 David Waterhouse
 0450 068 887
waterhoused@bigpond.com
 Please advise any dietary requirements

Upcoming Program:



May Sue—30th

May			2026	
2nd	Sat	Spin & Win		Bateau Bay
5th	Tues	Richard Jones	Westpac Chopper	Tumbi Umbi
5th	Tues	The Entrance DCaf	PCYC	Bateau Bay
9th	Sat	District Assembly		Paramatta
12th	Tues	Board Meeting Zoom		Zoom
17th	Sun	Bunnings BBQ		Tuggerah
19th	Tues	Jason Millers	Meals on Wheels	Tumbi Umbi
19th	Tues	The Entrance DCaf	PCYC	Bateau Bay
21st	Thur	MUNA	volunteers needed	Erina Hub
26th	Thur	Social Meeting		Forresters
30th	Sat	Red Shield Appeal		Killarney Vale
31st	Sunday	Red Shield Appeal		Killarney Vale
June			2026	
2nd	Tues	David Pollard	Police Youth Engagment	Tumbi Umbi
2nd	Tues	The Entrance DCaf	PCYC	Bateau Bay
6th	Sat	Spin & Win		Bateau Bay
9th	Tues	Board Meeting Zoom		Zoom
13th	Sat	Bunnings BBQ	Joint with Trojans	Tuggerah
16th	Tues	Speaker Int	Mingara	Tumbi Umbi
16th	Tues	The Entrance DCaf	PCYC	Bateau Bay
23rd	Tues	Change Over	Mingara Tasman Room	Tumbi Umbi



Here is Ashok Shrestha presenting our Rotary Banner to the Rotary Club of Dhulikhel in Nepal. In Ashok's words:

A special highlight of the event was the presentation of the banner of the Rotary Club of The Entrance (Australia), sent by Club President David Waterhouse, to Club President Rtn. Dr. Anish Joshi. This gesture symbolized the growing international fellowship and strong ties between Rotary clubs.



Better food today
A better world
tomorrow

Rotary The Entrance
sincerely thanks our sponsors
and partners, appearing
throughout this Bulletin.




Wyong Leagues Group


Bringing Communities Together



Reminder, our "3R's" apply to any form of abuse to women, men, children and our elderly:

1. **Recognise** signs of abuse
2. **Raise** your concerns "safely"
3. **Refer** victim to one of the many family violence agencies OR Make the call yourself!

MEMBERS		Partner	landline	Mobile
	BEATON, Lenore	Wendy Beaton *		0422 212 170
PP PHF	BENNETT, John	Linda Trewern		0433 945 050
PP 2PHF	CAMPBELL, Duncan			0427 176 737
PHF	CANNINGS, Don	Shirley	4339 9093	0421 838 504
3PP PHF	CRAWFORD, Gordon	Sue Kemp PHF *		0412 133 700
	DEAN, Anthea			0423 366 799
3PP 3PHF	DENMARK, Clive	Jenny		0400 425 210
PHF	GLOVER, Julie	Phil PP PHF*		0427 426 393
3PP 3PHF	HEARDER, Robin	Judi *	4333 8087	0404 160 548
	LIGHT, Pam			0407 483 355
PHF	PAUL, Louise	Shane Chisholm		0410 241 491
PHF	MALONEY, Greg	Ros		0414 389 590
2PP 2PHF	WATERHOUSE, David	Dianne PHF		0450 068 887
PDG 4PP 6PHF	WARD, Peter	Anne Cantrill	4385 1277	0414 321 773



Rotary

THE FOUR-WAY TEST
of the things we think, say or do

- Is it the TRUTH?
- Is it FAIR to all concerned?
- Will it build GOODWILL & BETTER FRIENDSHIPS?
- Will it be BENEFICIAL to all concerned?

* Family members